

HOLDER EASY CLIP CAR MOUNT

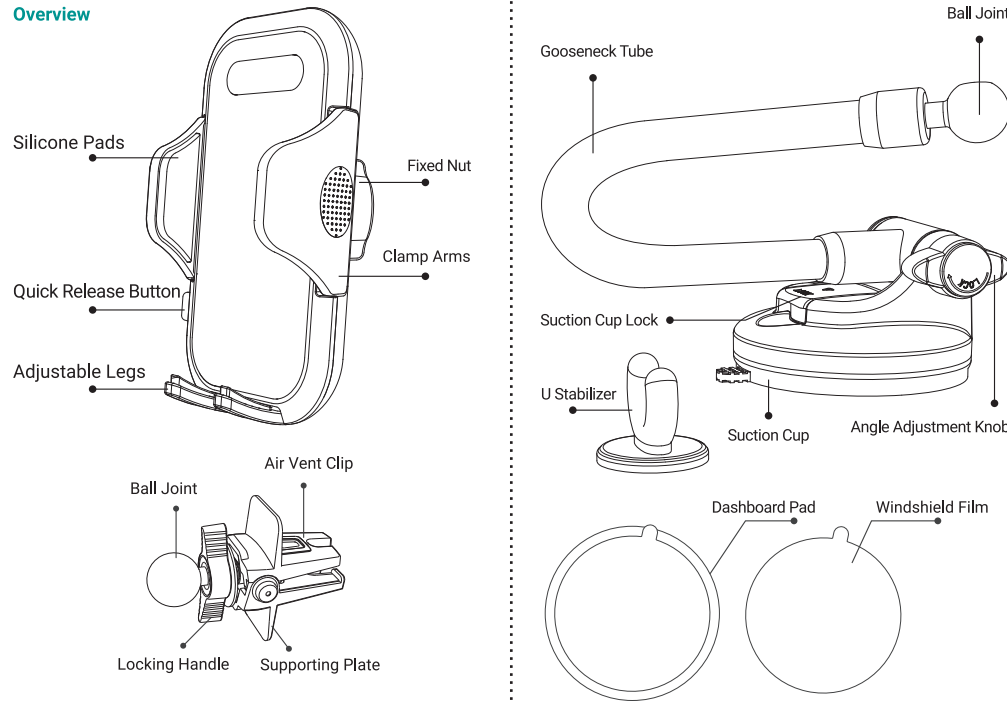
MAKE YOUR LIFE SIMPLE

Specifications

Product Name	Easy Clip Car Mount
Model	CTEZ11
Applicable Places	Windshield, Dashboard, Air Vent
Phone Width for the Car Mount	55mm-100mm
Retractable Length of the Telescopic Arm	108mm-150mm
Adjustable Height of the Adjustable Legs	0mm-15mm
Package List	Car Mount ×1, Suction Cup ×1, Dashboard Pad ×1, Air Vent Clip ×1, Windshield Film ×1, U Anti-Shake Stabilizer ×1, User Guide ×1

The parameters above are derived from the laboratory of VICSEED. The actual parameters may differ from product to product or other factors. All images shown here are for reference only.

Overview



Attentions

1. Please install the car mount in a suitable place before starting the journey, do not operate and adjust the car mount while driving.
2. Do not install the car mount in a position that interferes with the operation of the airbag or hinders driving.
3. Keep the car mount away from children.
4. The dashboard pad and anti-shake stabilizer are for one-time use, do not remove it off and reuse it. Please confirm the position before installing them.
5. The windshield film is only using for the windshield, not for the dashboard.

Tips for Using the Suction Cup

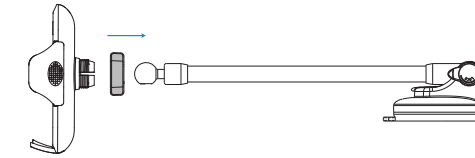
1. If the surface is flat and smooth, you can use the suction cup on the dashboard directly; While the surface is flat but not smooth, please use the suction cup on the dashboard pad.
2. Do not stick the suction cup to curved surfaces, plush fabric or uneven surfaces. Otherwise it would not be attached securely.
3. It is not recommended to attach the suction cup to the surface of leather, wall or glass film, because the suction cup with strong viscosity and attractiveness, which may cause surface damage.
4. If the suction cup is frequently used in high temperature, low temperature or humid conditions, the suction force will decrease; Please avoid direct exposure to the sun for a long time.

5. After using it for a while, if the suction is not sticky enough, please take down the suction cup and wash it with warm soap water. It will be sticky again after drying.
6. Please protect the suction cup with plastic wrap when not in use.

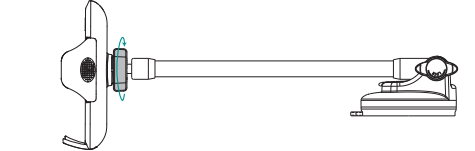
Installation Steps

Method 1- Use with the suction cup

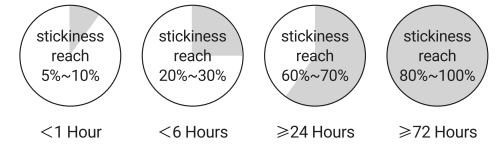
1. Unscrew the fixed nut completely, let the ball joint pass through the fixed nut (The thread must face to the groove). Push the ball joint firmly into the groove on the back of the car mount.



2. Tighten the fixed nut.



3. Choose a flat surface on the dashboard, and clean the surface where you need to install the car mount with a wet cloth. Wait it to dry, and then install the dashboard pad. (Tear off the red protective sticker of dashboard pad, stick the pad to the position where you want to install the car mount. Press it firmly for 1 minute to fix it. Let it sit for 24 hours before installing the car mount.)



The dashboard pad is disposable. Once pasted, it's hard to remove. Once applied, it cannot be used again. Please choose the appropriate position to install the dashboard pad.



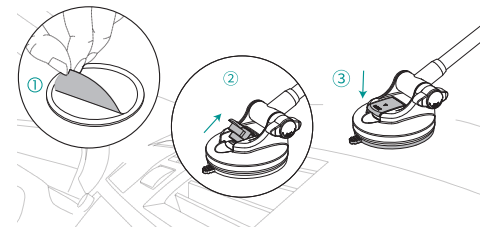
SHENZHEN HOMGMI TECHNOLOGY CO., LTD.

Add : RM1503, BLK C, Zhantao Technology BLDG, Minzhi Avenue, Minzhi ST, Longhua DIST, Shenzhen, China

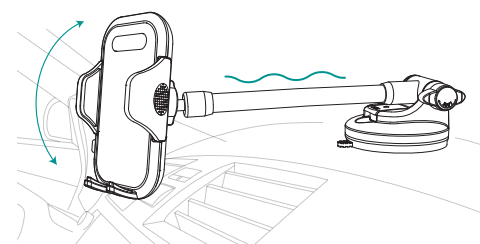
Shenzhen Homgmi Technology Co., Ltd. All Rights Reserved.

Made in China RoHS UK CA RECYCLE PRINTED WITH SOY INK

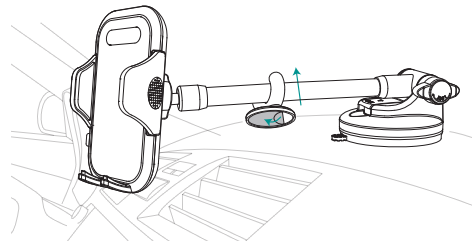
4. Attach the suction cup to the dashboard and press the suction cup lock to bottom position to lock the car mount.



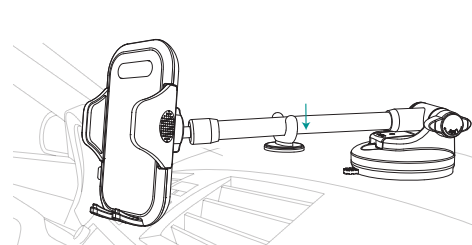
5. Adjust the angle of the car mount to fit your view.



6. Slide and clamp the U stabilizer onto the gooseneck tube to secure it.

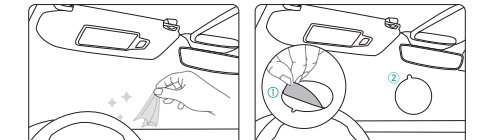


7. Remove the protective film of the U stabilizer and press to stick it onto the dashboard.



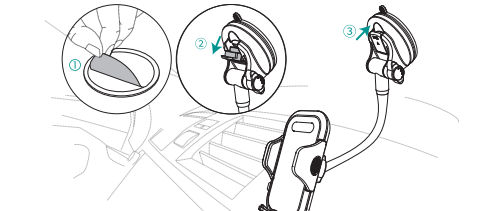
For Windshield Use

1. Clean the surface where you need to install the car mount with a wet cloth. Wait it to dry, and then stick windshield film. Tear off the protective sticker of windshield film, stick the film to the position where you want to install the car mount.

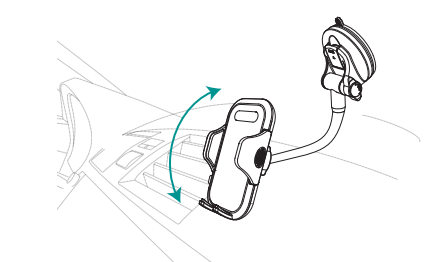


Warming tips: You can also use the suction cup directly on the windshield, but we recommend you stick the windshield film together for better using effect.

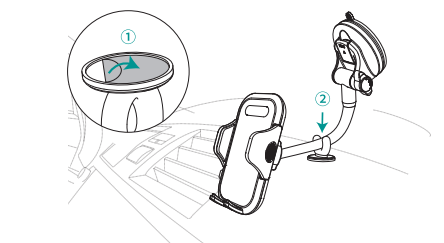
2. Attach the suction cup to the windshield and press the suction cup lock to bottom position to lock the car mount.



3. Adjust the angle of the car mount to fit your view.

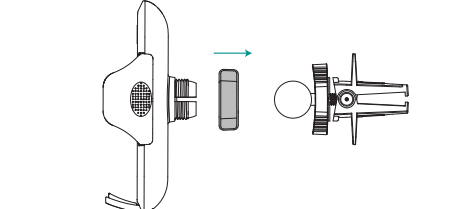


4. Fix the U anti-shake stabilizer or Bend gooseneck arm of "S" or "Z" shape for maximum stability.

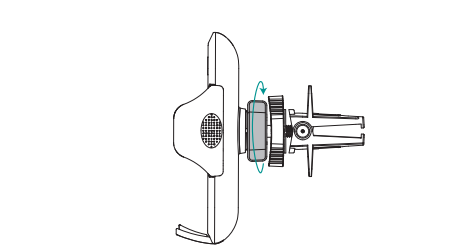


Method 2 – Use with the Air Vent Clip

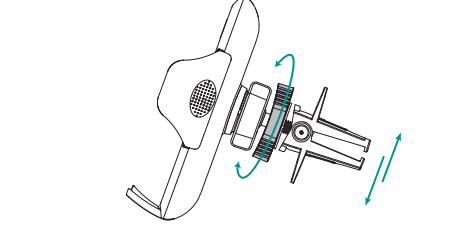
1. Unscrew the fixed nut completely, let the ball joint pass through the fixed nut (The thread must face to the groove). Push the ball joint firmly into the groove on the back of the car mount.



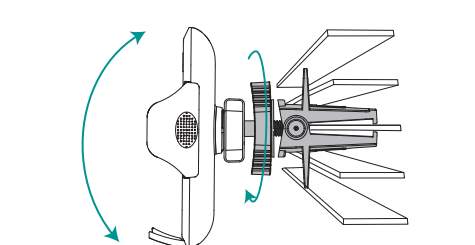
2. Tighten the fixed nut.



3. Twist the locking handle to adjust the opening of the clip to fit the air vent.

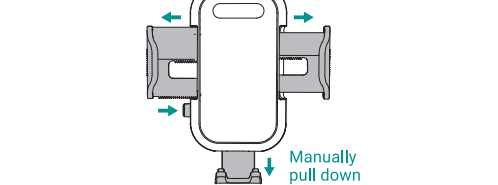


4. Please insert the car mount into a suitable place on the air vent. Then tighten the locking handle to secure the car mount firmly and adjust the angle of the car mount to fit your view.

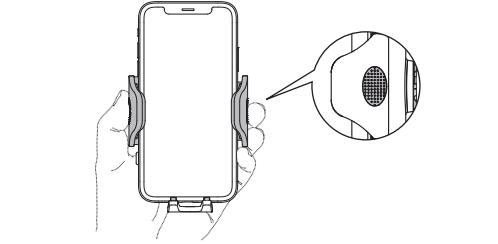


Using Steps

1. Press the quick release button and the clamps automatically open. Then put your phone into the holder and pull the adjustable legs according to the size of your phone, to ensure that your phone is clamped securely.



2. Place your phone into the holder and press the clamp arms towards each other. Then press the clamp arms with a little force again until you hear the "click". Your phone will be secured by the arm clamps.



Customer Service

- 12-month limited warranty
- Lifetime technical support
- support@vicseed.com
- www.vicseed.com

Any question, please feel free to contact us. Fix issue within 24 hours.

SCAN THE CODE TO WATCH USING VIDEO

