

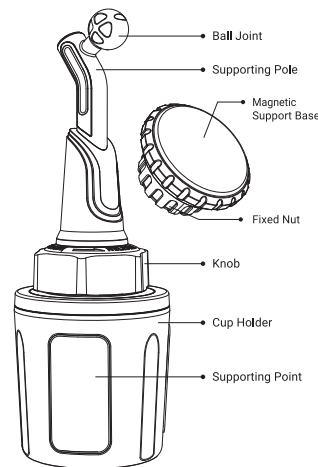
**HOLDER**  
**Magnetic Car Phone Mount**  
MAKE YOUR LIFE SIMPLE

**Specifications**

Product Name	Magnetic Car Phone Mount
Model	CTVK65
Applicable Places	Car Cup Holder
Package List	Magnetic Car Phone Mount x1, Cup Holder x1, Accessories Package x1, User Guide x1

The parameters above are derived from the laboratory of VICSEED. The actual parameters may differ from product to product or other factors. All images shown here are for reference only.

**Overview**



**Accessories Package List**

- Cleaning Wipe**  
Wipe the surface of the mobile phone/mobile phone shell to ensure that there is no dirt residue so that the transparent sticker/metal sheet sticks firmly.
- Transparent Sticker**  
Paste on the back of the phone/phone case to keep the surface smooth so that the metal sheet is firmly pasted. It's also easy to remove the metal sheets afterward.
- Rectangular Metal Sheet**  
Suitable for large size mobile phones with smooth surfaces.

- Thick Round Metal Sheet**  
Suitable for small size mobile phones with textured surfaces (non-arcs) and smooth surfaces.
- Thin Round Metal Sheet**  
Suitable for small size mobile phones with smooth surfaces.

**Note:**

- Because the phone/phone case has no magnetism, please be sure to paste the metal sheet on the back of the mobile phone/mobile phone shell before using it. The phone firmly adsorbs on the car mount by the magnetic principle.
- Accessories Use Order: Wipe the surface (cleaning wipe)—paste transparent sticker—paste metal sheet

**Installation Steps**

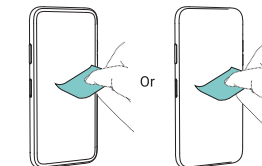
**Accessories Package Installation**

- Stick on the back of the phone**  
(Need to be used with the transparent sticker)
- Stick on the back of the phone case**  
(Square and thin round metal sheets should be used with the transparent sticker, thick round metal sheets can be used without the transparent sticker)

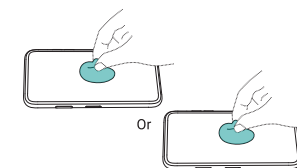
**Note:**

- This product offers rectangular and round metal sheets and transparent stickers. You could choose a suitable sheet according to use.
- Please use this product with a phone case which has a flat and smooth back. It is not recommended to attach the metal sheet to the phone case with rough surfaces (such as frosted surfaces), which would affect adhesive.

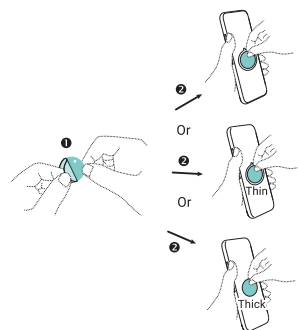
1. Clean the surface where you're placing the metal sheet with the cleaning wipe.



2. (Note: If you paste a thick round sheet of metal on the phone case, skip this step.) Pull protective film off the transparent sticker, then stick it to the right position on the back of the phone/phone case.



3. Pull protective film off the metal sheet, then paste it in the position of transparent sticker on the phone/phone case (or directly on the phone case).

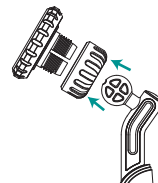


4. Press the above sticky place firmly for about 1 minute.

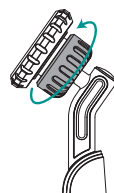
**Note:** Metal sheets cannot be reused.

**Car Mount Installation**

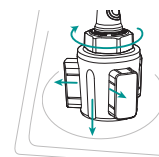
1. Unscrew the fixed nut completely, let the ball joint pass through the fixed nut (The thread must face to the groove). Push the ball joint firmly into the groove on the back of the magnetic support base.



2. Tighten the fixed nut.

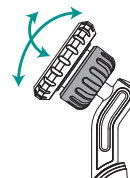


3. Put the cup holder into the car cup holder and screw the knob to adjust the support point with the car cup holder in order to fix the cup holder.

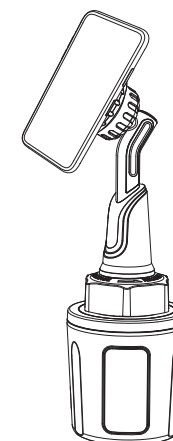


**Note:** Be sure to tighten the knob to fix the cup holder tightly to prevent it from loosening and falling.

4. Adjust the angle of the magnetic support base to the best viewing angle for your driving environment.



5. Put the phone on the magnetic support base and use it.



**Attentions**

1. Avoid dropping.
2. Do not disassemble.
3. Do not install while driving.
4. Do not install the car mount in places that interfere with airbag or driving.
5. Please keep this product away from any magnetic items. Otherwise, demagnetization might happen.
6. Keep the car mount away from children.

**Customer Service**

- 12-month limited warranty
- Lifetime technical support

**SHENZHEN HOMGMI TECHNOLOGY CO., LTD.**

Add: RM1503, BLK C, Zhantao Technology BLDG, Minzhi Avenue, Minzhi ST, Longhua DIST, Shenzhen, China  
Shenzhen Homgmi Technology Co., Ltd. All Rights Reserved.

Made in China

