

SCAN THE CODE TO WATCH USING VIDEO



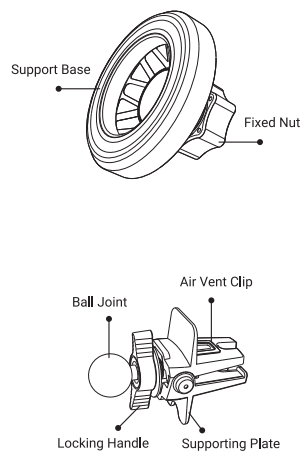
HOLDER
MAGNETIC CAR MOUNT
MAKE YOUR LIFE SIMPLE

Specifications

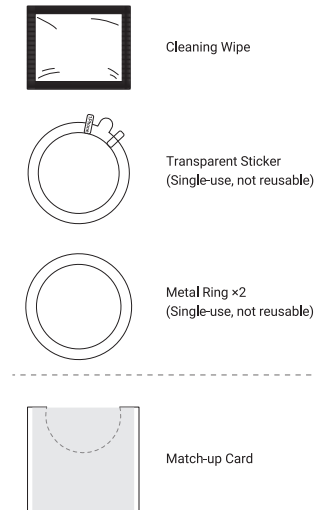
Product Name	Magnetic Car Mount
Model	CTVK59
Applicable Place	Air Vent
Package List	Magnetic Car Mount ×1, Air Vent Clip ×1, Accessories Package ×1, Match-up Card ×1, User Guide ×1

The parameters above are derived from the laboratory of VICSEED. The actual parameters may differ from product to product or other factors. All images shown here are for reference only.

Overview

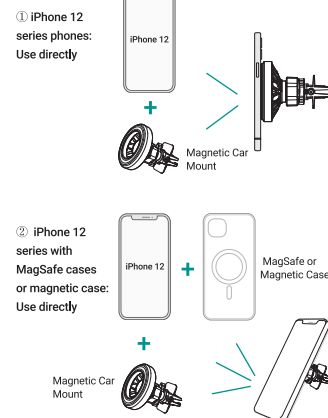


Fittings Included in the Accessories Package

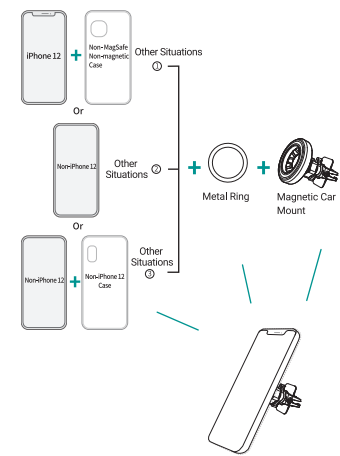


Operating Instructions

The magnetic car phone mount shall be used in the following 3 usage conditions. Please choose the corresponding usage according to the model of your mobile phone.

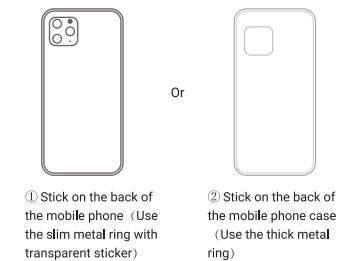


③ Other situations (iPhone 12 with other normal case, or other phones with/ without a case): Use with metal ring



Assembling the Metal Ring

There are two ways to paste the metal ring, which are listed as follows. Please choose between them according to your needs.

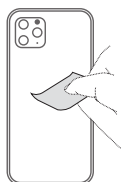


Note:
• To better protect your phone, it is recommended that paste the metal ring on the back of the phone case.
• Please use the metal ring with a phone case that has a flat and smooth back surface. Phone case with rough surfaces would affect the adsorbing effect.
• Please use the phone's match-up card to aim at the position before pasting the metal ring.

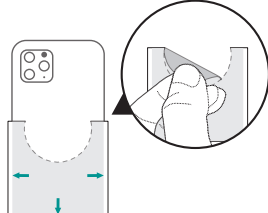


VDPI01059A

1. Use a cleaning wipe to clean the back of the phone (or phone case) where the metal ring needs to be pasted.

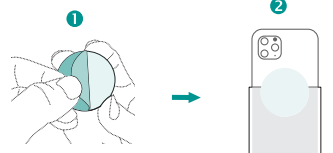


2. Select the match-up card that matches the model of your phone, (remove the middle semicircle) and aim it at the edge at the back of the phone/ phone case.

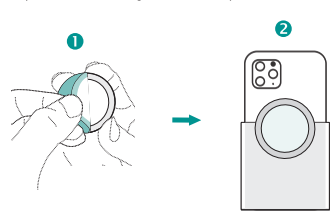


3. Remove the protective cover of the transparent sticker, aim it at the half-circle of the match-up card before pasting it on the back of the phone/ phone case.

Note: When paste the thick metal ring on your phone case, you don't need to paste the transparent sticker on the phone case.



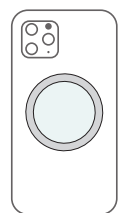
4. Tear off the protective paper of the metal ring and paste the metal ring onto the transparent sticker.



5. Press firmly along the metal ring to secure it.

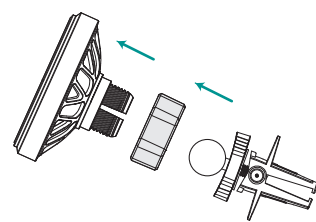


6. Remove the match-up card, and the installation is completed.

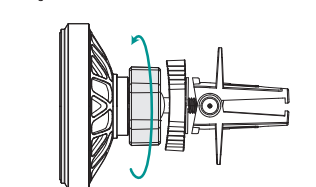


Assembling the Car Mount

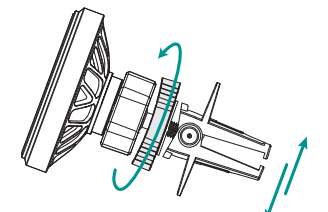
1. Unscrew the fixed nut completely, let the ball joint pass through the fixed nut (The thread must face to the groove). Push the ball joint firmly into the groove on the back of the car mount.



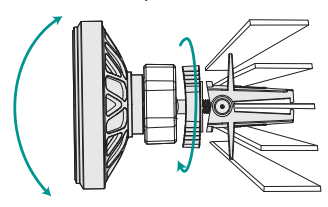
2. Tighten the fixed nut.



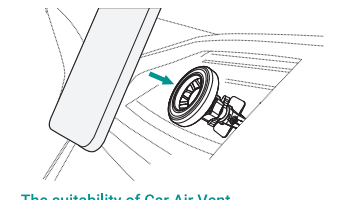
3. Twist the locking handle to adjust the opening of the clip to fit the air vent.



4. Please insert the vent clip into a suitable place on the air vent. Then tighten the locking handle to secure the car mount firmly and adjust the angle of the car mount to fit your view.



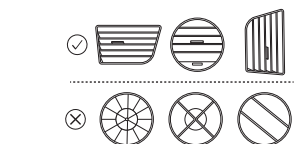
5. Put the phone on the support base of the car mount and use it.



The suitability of Car Air Vent

The air vent clip could be compatible with horizontal and vertical air vent outlets.

But it cannot support non-intensive, circular or special-shaped air vent outlets.



Note: To protect the air vent blade and air vent clip, please do not twist the air vent clip too tight.

Attentions

1. Avoid dropping.
2. Do not disassemble.
3. Do not install while driving.
4. Do not install the car mount in places which interferes with air bag or driving.
5. Please keep this product away from any magnetic items, otherwise, demagnetization might happen.
6. Keep the car mount away from children.

Customer Service

- 12-month limited warranty
- Lifetime technical support
- support@vicseed.com
- @vicseedglobal

For more information, please visit:
www.vicseed.com

SHENZHEN HOMGMI TECHNOLOGY CO., LTD.
Add : RM1503, BLK C, Zhantao Technology BLDG, Minzhi Avenue, Minzhi ST, Longhua DIST, Shenzhen, China
Email : support@vicseed.com
Web : www.vicseed.com
Shenzhen Homgmi Technology Co., Ltd. All Rights Reserved.

Made in China

