

Specifications

Product Name	Magnetic Wireless Car Charger
Model	CTEZ102
Input	5V≐2A/ 9V≐2A/ 12V≐2A
Output	5W/7.5W/10W/15W
Charging Distance	≐(4-6)mm
Working Temperature	32°F-95°F (0°C-35°C)
Applicable Place	Air Vent
Package List	Magnetic Wireless Car Charger ×1, Air Vent Clip ×1, Accessories Package ×1, Match-up Card ×1, Charging Cable ×1, User Guide ×1

The parameters above are derived from the laboratory of VICSEED. The actual parameters may differ from product to product or other factors. All images shown here are for reference only.

Compatibility

1. The Suitability of Car Air Vent

① Compatible with horizontal and vertical air vent outlets.



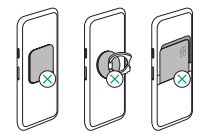
② Not compatible with non-intensive, circular or special-shaped air vent outlets.



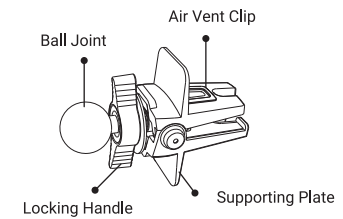
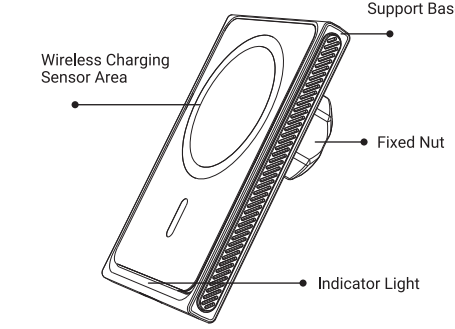
Note: Please do not twist the air vent clip too tight, to protect the air vent blades and air vent clip.

2. Phone Case

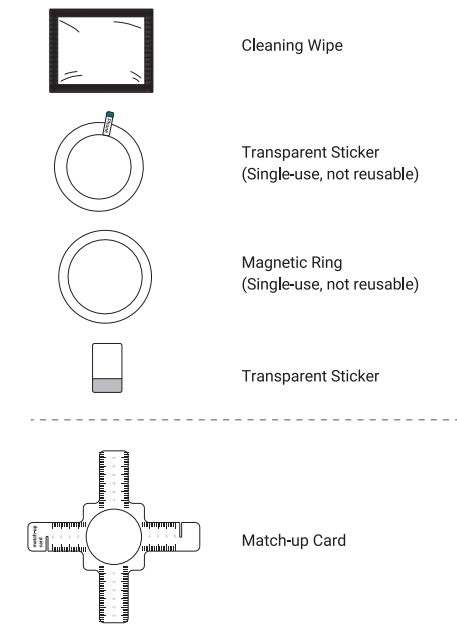
① Compatible with smooth surface phone cases thinner than 6mm (0.23inch).
② Not compatible with:
a. Any foreign object between your smartphone and this magnetic wireless car charger, such as metal, credit cards, door keys, coins, magnet, or NFC cards.
b. Phone cases may affect wireless charging, such as ultra-thick (>6mm/0.23 inch) phone case or a case with a bumpy surface, stand.
c. PopSockets, ring holder etc.



Overview

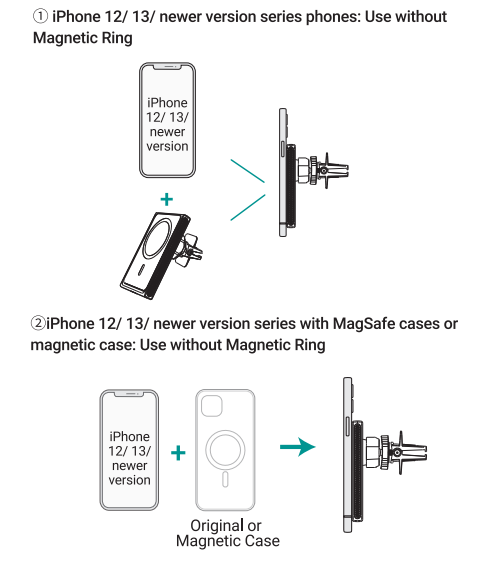


Fittings Included in the Accessories Package

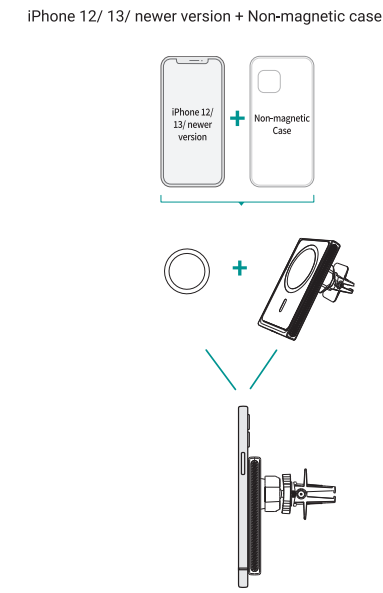


Operating Instructions

The magnetic wireless car charger shall be used in the following 3 usage conditions, Please choose the corresponding usage according to the model of your mobile phone.

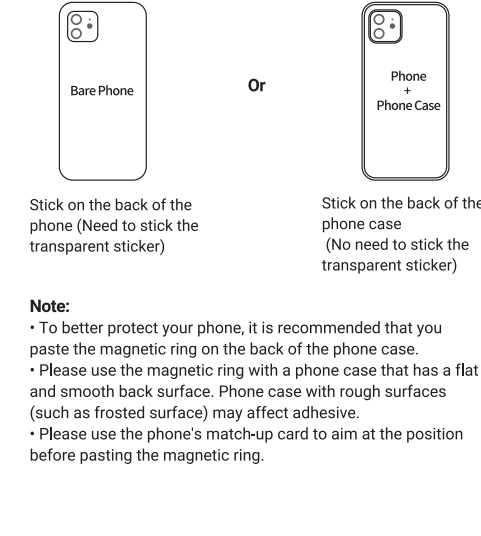


③ Other situations iPhone 12/ 13/ newer version with Non-magnetic case Please use with the **magnetic ring**. **The magnetic ring must stick outside of the phone case.**

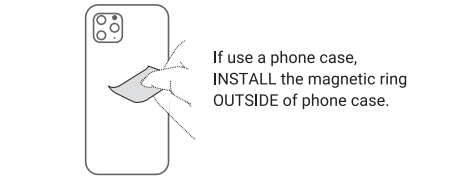


Assembling the Magnetic Ring

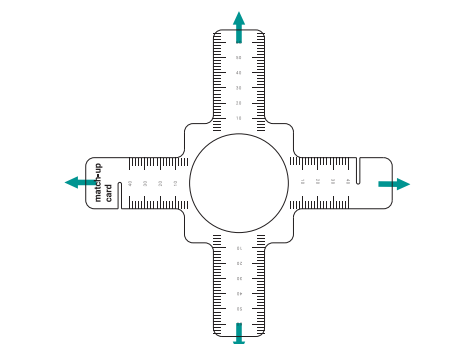
***There are two ways to paste the magnetic ring, which are listed as follows. Please choose between them according to your needs.**



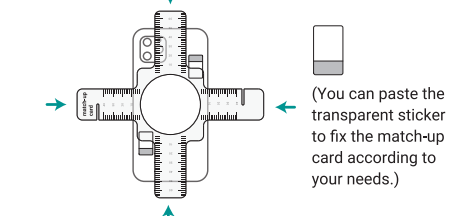
1. Use a cleaning wipe to clean the back of the phone (or phone case) where the magnetic ring needs to be pasted.



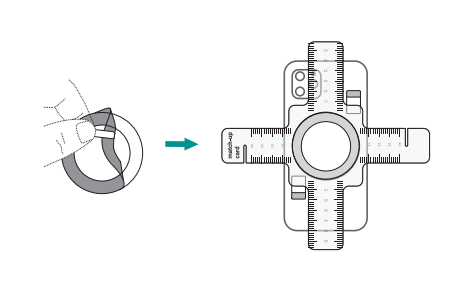
2. Unfold the match-up card.



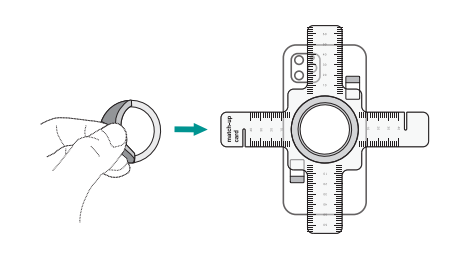
3. Aim the circle of the match-up card at the center of your phone and ensure that the length from the edge of the circle to the left and right, upper and lower edges of the phone are all the same.



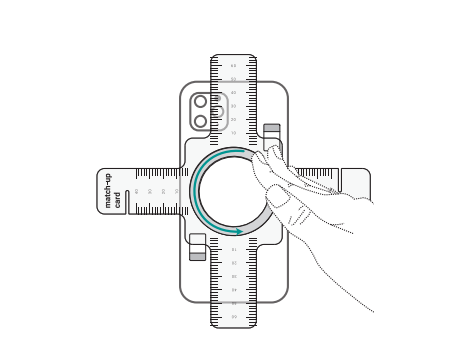
4. Remove the protective cover of the transparent sticker, aim it at the circle of the match-up card before pasting it on the back of the phone (or phone case).



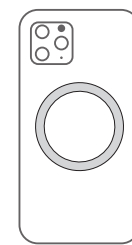
5. Tear off the protective paper of the magnetic ring and paste the magnetic ring onto the transparent sticker.



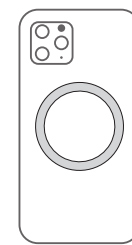
6. Press firmly along the magnetic ring to secure it.



7. Remove the match-up card, and the installation is completed.

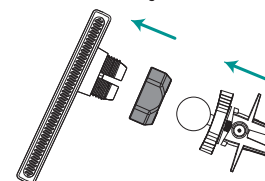


8. Note: After pasted the magnetic ring, please wait for 24 hours. Then this magnetic wireless car charger will hold your phone firmly.

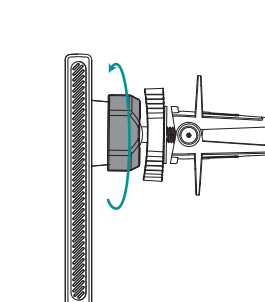


Assembling the Magnetic Wireless Car Charger

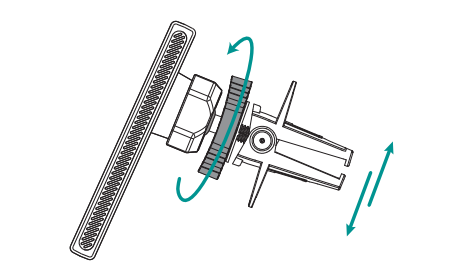
1. Unscrew the fixed nut completely, let the ball joint pass through the fixed nut (The thread must face to the groove). Push the ball joint firmly into the groove on the back of the magnetic wireless car charger.



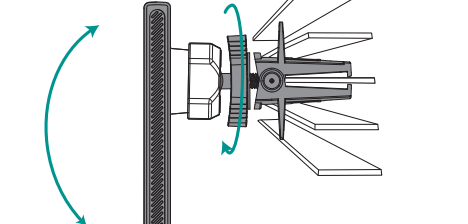
2. Tighten the fixed nut.



3. Twist the locking handle to adjust the opening of the clip to fit the air vent.

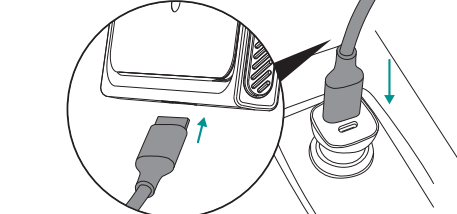


4. Please insert the magnetic wireless car charger into a suitable place on the air vent. Then tighten the locking handle to secure the magnetic wireless car charger firmly and adjust the angle of the magnetic wireless car charger to fit your view.



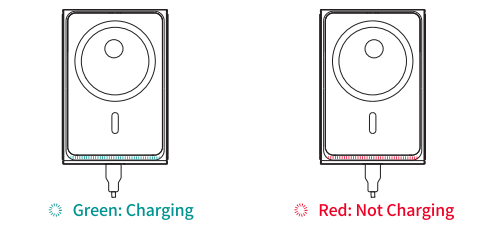
Power On

Please use original power cable supplied to connect the magnetic wireless car charger to the car charger adapter (support QC3.0 or PD).



Please note: Do not connect magnetic wireless car charger to the in-car USB port directly. There won't be enough power as it will cause slow charging.

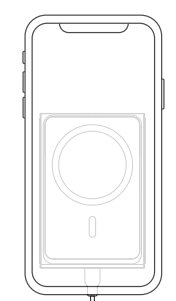
LED Indicator Instruction



Charging Status	LED Indicator Display
Power on	The Green indicator flashes
Standby	The Green indicator flashes
Charging	The Green indicator on
Foreign Object Detector	The red indicator flashes
Foreign Object Removed	The red indicator lasts 3s then turns green

Using Steps

Put the phone on the support base of the magnetic wireless car charger and start wireless charging.



FAQs

1. No charging or slow charging

- Please check the status of the LED light, the green light indicates charging and the red light indicates low power.
- For 10W, 7.5W fast charging you must use with the QC 3.0 car adapter. Do not connect directly onto the in car USB port.
- Check if your phone contains any metals. Don't use or place metal plates, credit cards, Popsockets on the back of your phone when charging.
- Ensure your phone case is thinner than 4mm, otherwise the phone will not be able to wireless charge.
- The charging speed will be slow if the temperature is too high. Turn off navigation and other unused apps whilst also lowering the temperature of the car with the air conditioner.
- Please use the original power cable supplied with the magnetic wireless car charger, this will ensure fast and safe charging.

2. Working temperature

The perfect temperature would be 32°F-95°F (0°C-35°C). The mount cannot function properly when the temperature is too high or too low.

Changes or modifications not expressly approved by the party responsible for compliance could void the user's authority to operate the equipment.

This equipment has been tested and found to comply with the limits for a Class B digital device, pursuant to Part 15 of the FCC Rules. These limits are designed to provide reasonable protection against harmful interference in a residential installation. This equipment generates uses and can radiate radio frequency energy and, if not installed and used in accordance with the instructions, may cause harmful interference to radio communications. However, there is no guarantee that interference will not occur in a particular installation. If this equipment does cause harmful interference to radio or television reception, which can be determined by turning the equipment off and on, the user is encouraged to try to correct the interference by one or more of the following measures:
- Reorient or relocate the receiving antenna.
- Increase the separation between the equipment and receiver.
- Connect the equipment into an outlet on a circuit different from that to which the receiver is connected.
- Consult the dealer or an experienced radio/TV technician for help.

This device complies with part 15 of the FCC rules. Operation is subject to the following two conditions (1) this device may not cause harmful interference, and (2) this device must accept any interference received, including interference that may cause undesired operation.

Customer Service

- 12-month limited warranty
- Lifetime technical support
- support@vicseed.com
- www.vicseed.com

Any questions, Please feel free to contact us. Fix issue within 24 hours.

SCAN THE CODE TO WATCH USING VIDEO



SHENZHEN HOMGMI TECHNOLOGY CO., LTD.
Add : RM1503, BLK C, Zhantao Technology BLDG, Minzhi Avenue, Minzhi ST, Longhua DIST, Shenzhen, China
Shenzhen Homgmi Technology Co., Ltd. All Rights Reserved.

Made in China

